

Off Center 4 Patch Backing

Here's my favorite pieced backing - an Off Center 4 Patch. I use this back when I don't have enough of a single fabric to make the backing or enough time to piece multiple fabrics together.

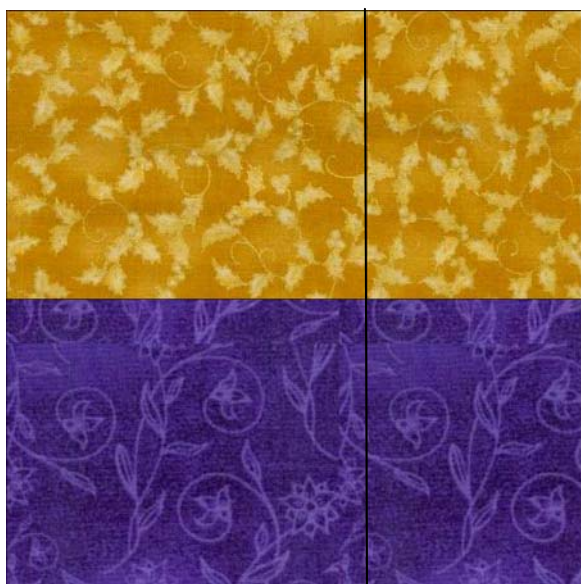
I take 2 pieces of coordinating fabric that are long enough to cover the width of my quilt plus 8-10 inches (I need the additional width for the longarm – you may not need as much. For a quilt that is 55 inches wide – I'd cut them 63-65 inches wide).

My selvages are running horizontally here and the WOF is going to provide the length I need.

I trim one selvage off each fabric and sew the two together



I make an offset cut so the seam won't fall in the center of my quilt. (see vertical line)



Flip one side around and sew back them together to create the 4 patch.

This gives me a backing that is about 84 – 88 inches long. To offset my horizontal seam I position my quilt near the top of my backing rather than centering it and end up with a backing as pictured below.

