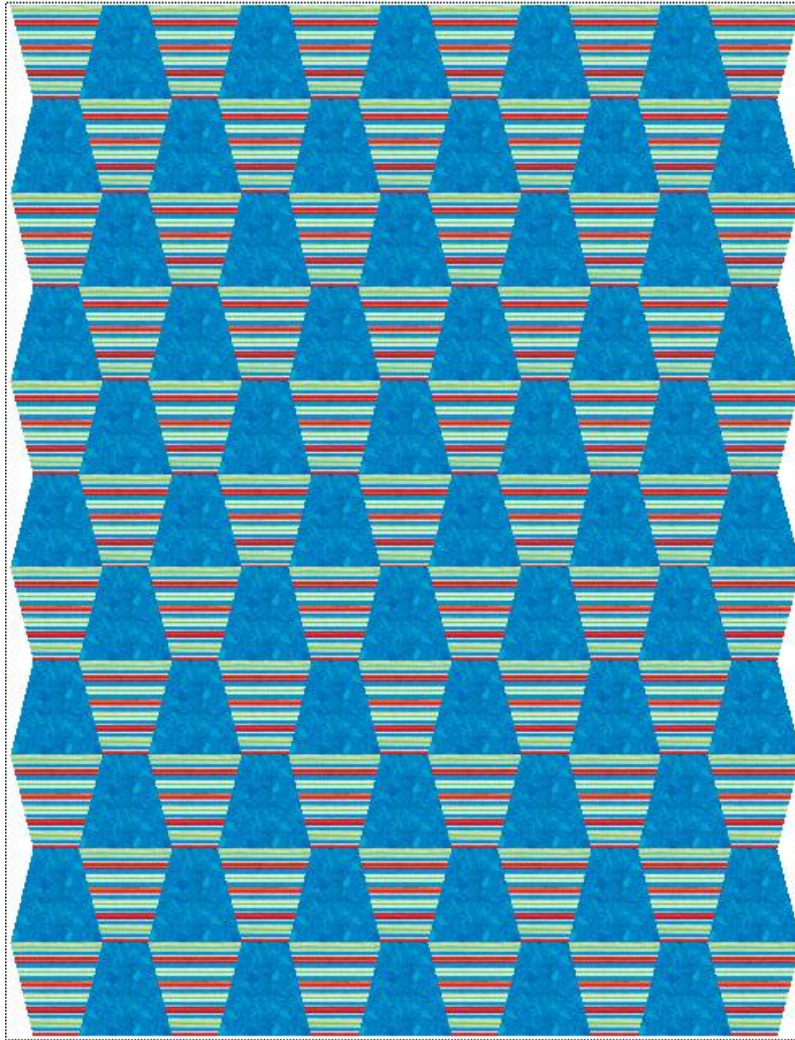


String Tumblers

Quilt Size is approximately 50 x 66

Block size is 6 inches (6.5 with seam allowances)

Setting is 11 x 11 blocks



QUILT NOTES

- My quilt is made with string pieced tumblers alternated with solid ones. For an easy alternative, consider using a stripe fabric in place of the string pieced block.
- The quilt uses 60 solid tumblers and 61 string pieced.
- I used the GO Cutter from <http://www.accuquilt.com/> and their 6.5 inch Tumbler die but you may use an acrylic template or create your own template for the Tumbler blocks.
- The measurements for the tumbler I used (including seam allowances) are :
 - 6.5 inches tall
 - 6.5 inches wide at the base
 - 3.5 inches wide at the top

PIECING INSTRUCTIONS

To create the string pieced tumbler, I sewed strings together first and then cut the tumbler shape from the pieced fabric. I used strings that were at least 7 inches long for the base but used shorter ones toward the top of the block at times to take advantage of smaller pieces.

Be careful not to get narrow pieces at the top and bottom of your string pieced unit by using larger pieces that give you room to trim.



Iron all seam allowances in one direction. I don't iron these until my unit is wide enough to cut my tumbler.



I placed my string pieced scrap on my GO Tumbler Die and cut as shown below. Use your chosen method for cutting the tumblers. If using a template, you can

create a larger string piece and cut multiple tumblers from it.



ASSEMBLE TOP

Starting with a string pieced block, alternate string blocks with plain blocks using the drawing on page one of these instruction – 11 blocks across and 11 rows down.

Increase the size of the quilt by increasing the number of blocks.

My quilt was inspired by a scrappy tumbler quilt by Kathie Holland. See her quilt at the link below:

[Scrapy Tumbler Quilt](#)