

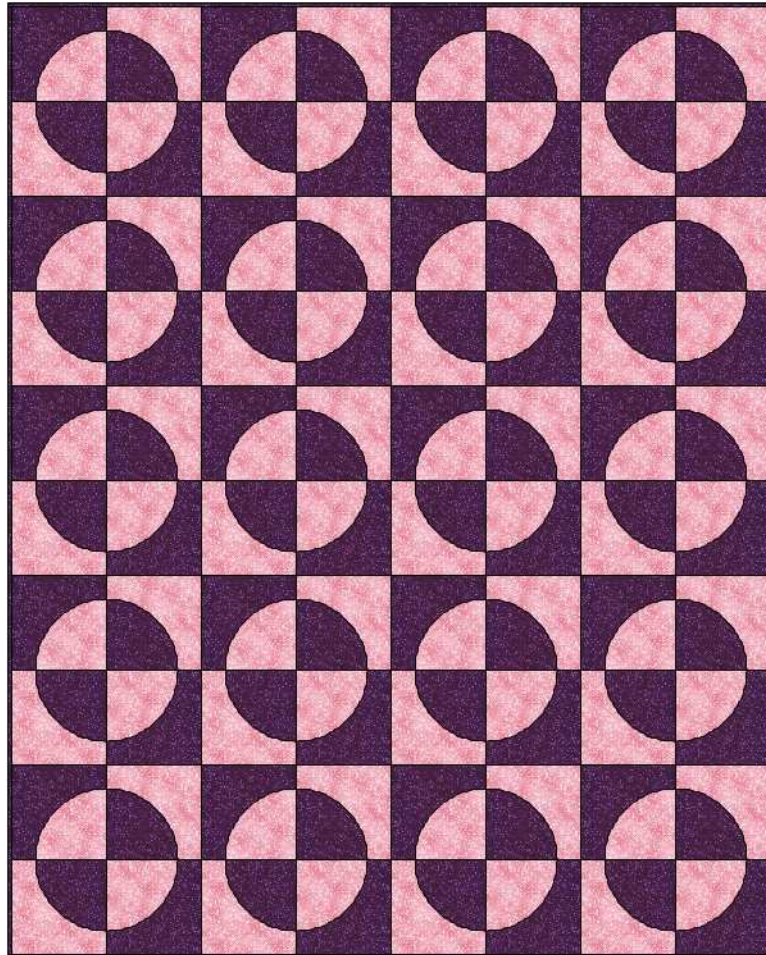
# DRUNKARD'S PATH

---

QUILT SIZE 56x70

BLOCKS SET 4x5

BLOCK SIZE 7 INCH FINISHED (7.5 INCHES WITH SEAM ALLOWANCES) WHICH ARE ASSEMBLED BY 4'S INTO A 14 INCH FINISHED BLOCK (14.5 INCHES WITH SEAM ALLOWANCES).



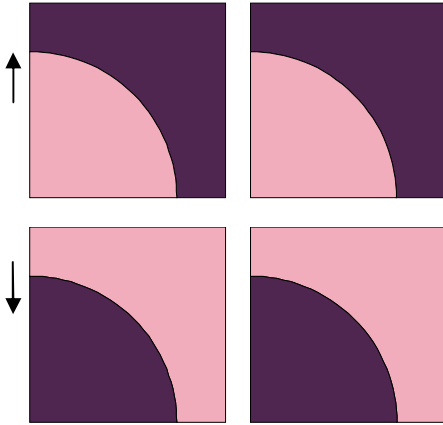
## QUILT NOTES

1. My quilt will be pieced with a variety of pink and purple fabrics although the drawing above shows it in two colors.
2. I will cut my quilt with the [Accuquilt GO](#) Drunkard's Path Die.
3. A template is provided at this link for those without the die. **PLEASE NOTE** – because of the size of the template – check it after printing to make sure the seam allowances have NOT been cut off. Always make a test block to ensure the template printed the correct size before cutting the entire quilt.
  - <http://www.maryquilts.com/wp-content/uploads/2010/06/Drunkards-Path-Template.pdf>

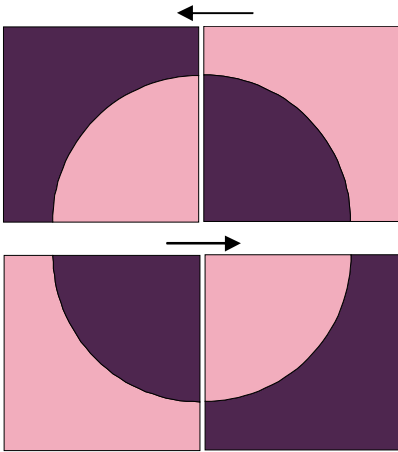
## PIECING THE BLOCKS – MAKE 20

For each block you will need one purple and one pink fabric.

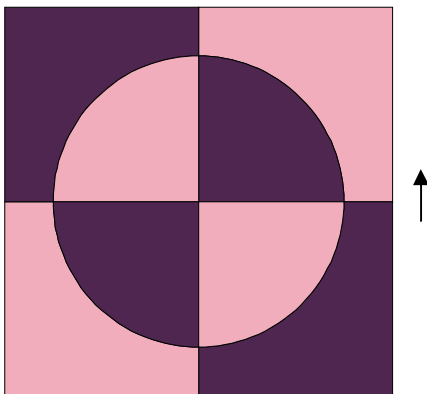
Cut 2 quarter circles and 2 background pieces from each fabric and sew as shown below. You will have 4 blocks. Press toward the purple.



Assemble the block as show below pressing the seam allowances to the purple background.



Make 20 blocks using a variety of pink &purple fabrics.



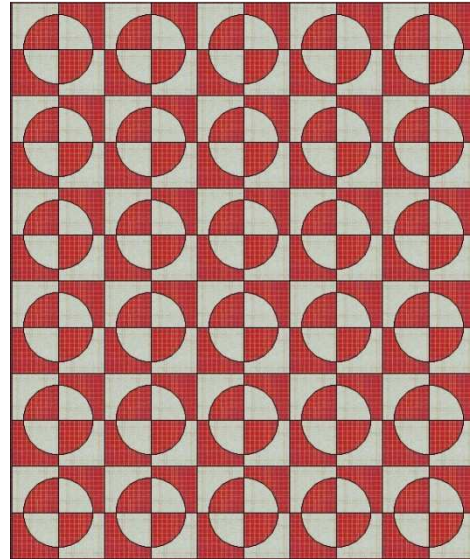
## ASSEMBLE THE TOP

Using the diagram on page 1 of these instructions assemble the blocks into 5 rows with 4 blocks in each row.

### ADDITIONAL SIZES:

Using the same directions, a larger quilt can be made by adding more blocks and/or a border.

Set 5 x 6, this quilt is 70 x 84



Set 4 x 6 with a 5 inch finished border (cut 5.5 inches) this quilt finishes at 65 x 93.

