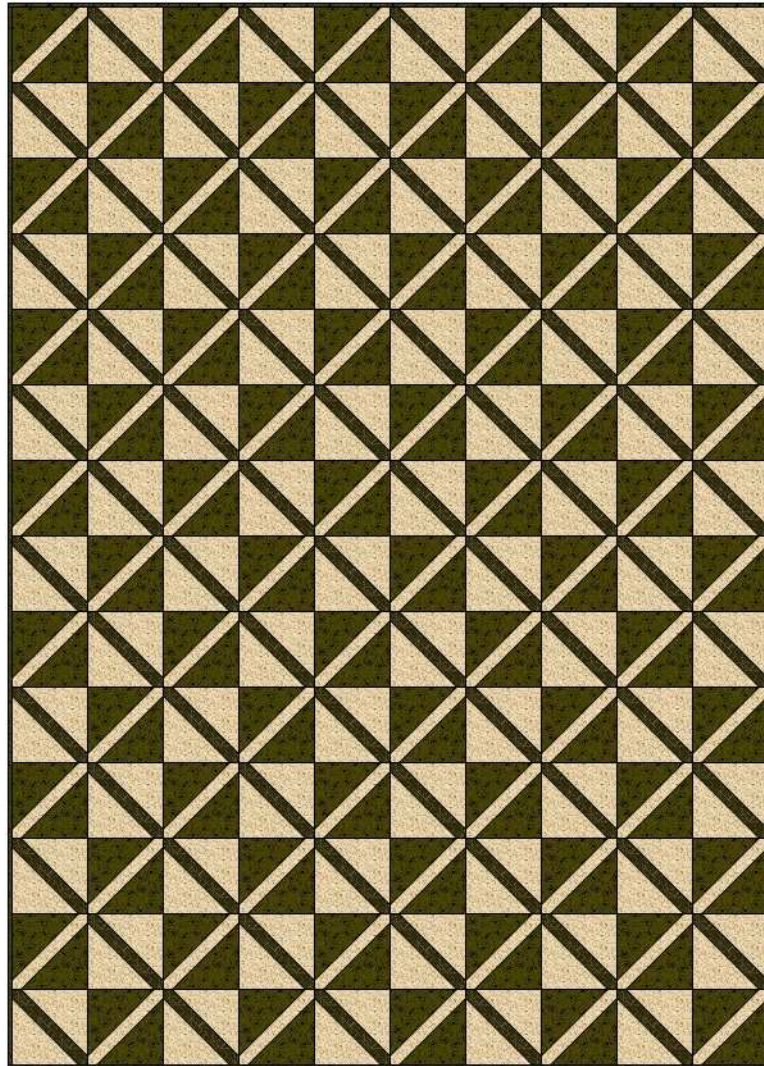


LATTICE QUILT

QUILT SIZE 55x77

BLOCKS SET 10x14

BLOCK SIZE 5.5 FINISHED (6 INCHES WITH SEAM ALLOWANCES)



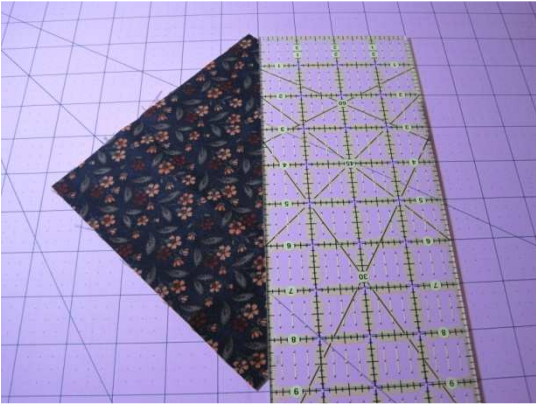
QUILT NOTES

1. Although shown in just two colors, my quilt is scrappy.
2. I used my Accuquilt GO 6.5 inch half square triangle and 1.5 inch strip dies to make my quilt although instructions are provided for those without the dies. Please NOTE that those blocks will finish at 6 inches (6.5 w/ seam allowances) versus the 5.5 inches(6 inches w/ seam allowances) that my blocks finished at.
3. I don't usually provide fabric amounts since my quilts are scrappy but EQ7 indicates that 4 yards of lights and 4 yards of darks are needed to make these blocks. These fabric estimates have **NOT** been tested and EQ tends to be generous in its estimates in my opinion.

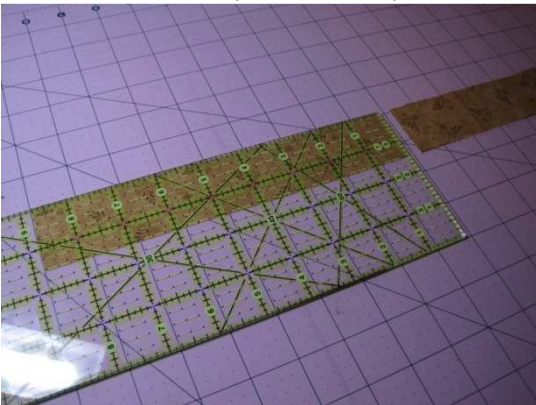
PIECING THE BLOCKS

I used my GO dies to make my quilt so I'll show you my blocks first and then provide an option for rotary cut blocks.

My Triangle pieces are notched when cut with my GO die so I measure from notch to notch.



This measurement of 8.75 inches gives me the length that I need to cut my 1.5 inch strips into.



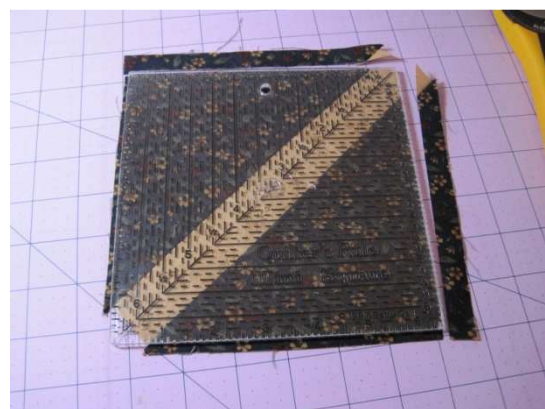
Sewing with the strips on the bottom to avoid stretching the bias edges of my triangle, I sew both pieces to my center strip.



Press seam allowances to the dark fabric – in this block, that's toward the triangle pieces. In Block B, that will be toward the center strip.



Square blocks to 6 inches by placing the diagonal line of your ruler in the center of the strip. Trim 2 sides and then turn the block and trim to 6 inches.



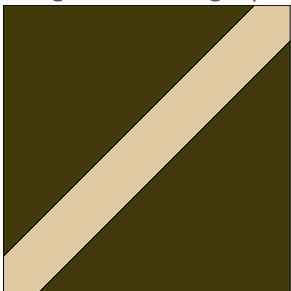
Make sure your center strip falls inside the 6 inch mark on your ruler before making your first cut.

This next photo shows me lining up my second cut.



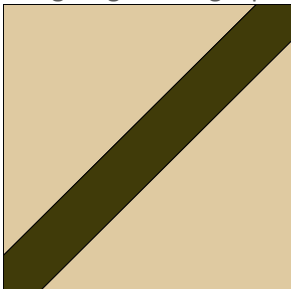
BLOCK A – MAKE 70

Using 2 dark triangle pieces and a light center strip



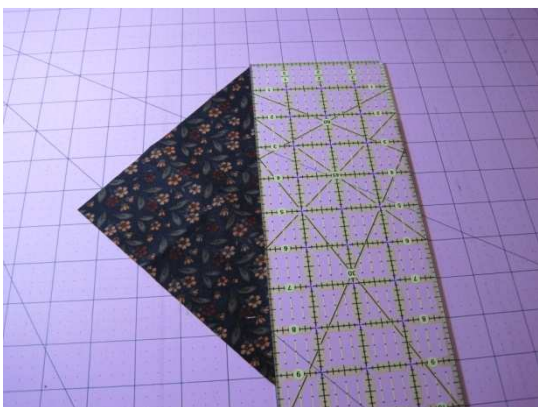
BLOCK B – MAKE 70

Using 2 light triangle pieces and a dark center strip



TO PIECE BLOCKS WITHOUT GO DIES

I started with a 6.5 inch block, cut in half on the diagonal and a 1.5 inch strip for the centers.



When I measure this triangle on the diagonal, I get a measurement that's close to 9.25 inches and that's the size that I sub cut my 1.5 inch strips into for my centers.



When lining up these blocks, your center strip might be slightly longer but as I'm going to trim all the blocks after piecing them I don't worry about this.

You'll be able to square these blocks up to 6.5 inches so **please note**, your quilt will be larger than mine unless you adjust the number of blocks you use.



ASSEMBLE THE TOP

To make it easy, I assemble 4 blocks as shown below and then sew those together as shown in the quilt diagram on page one of these instructions.

