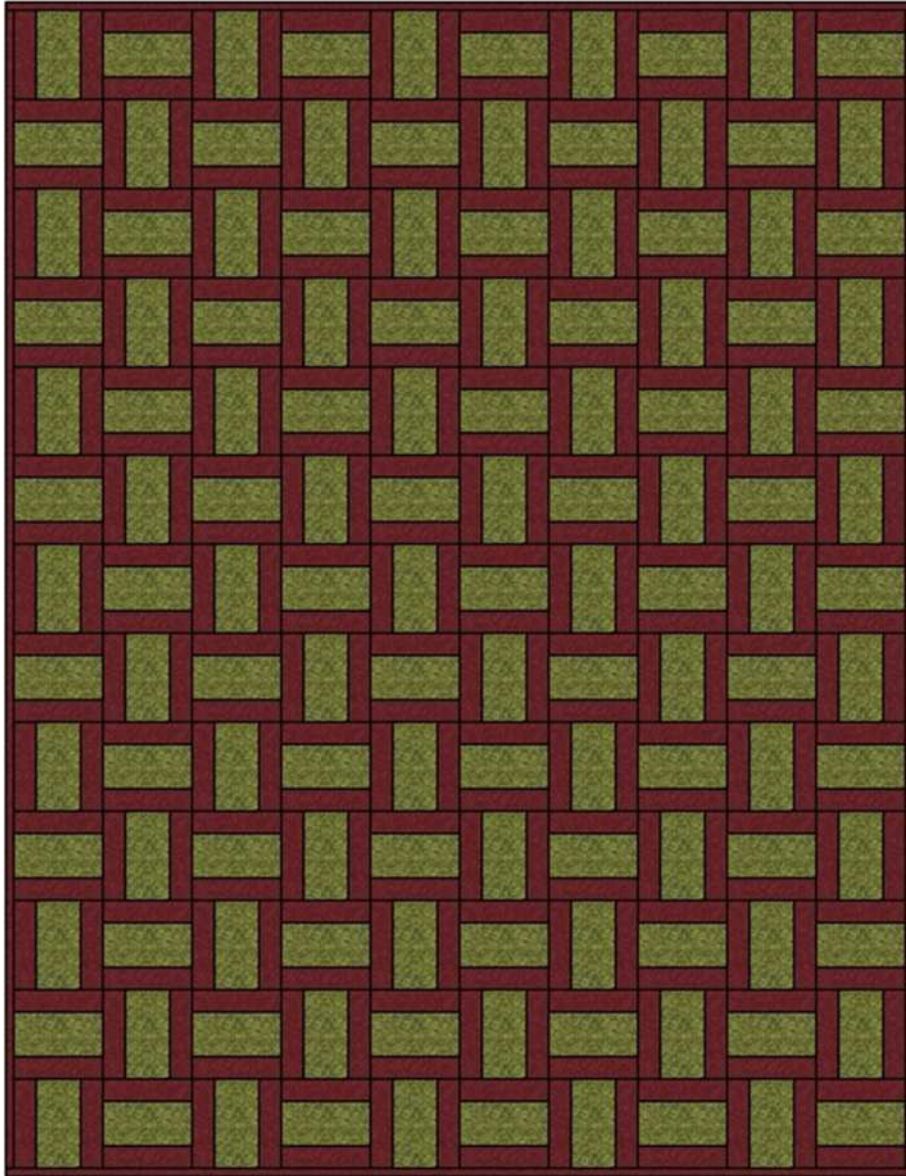


FOREST BRICKS

QUILT SIZE 60 x 78

BLOCKS SET 10x13

BLOCK SIZE 6 INCHES (6.5 INCHES WITH SEAM ALLOWANCES)



QUILT NOTES:

1. My original design called for borders but I ended up with more blocks than I needed and decided to not put the borders on the quilt.
2. I used the same brown but **many, many** different greens for my quilt.

PIECING BLOCKS

Green Bricks are cut 3.5 x 6.5 inches

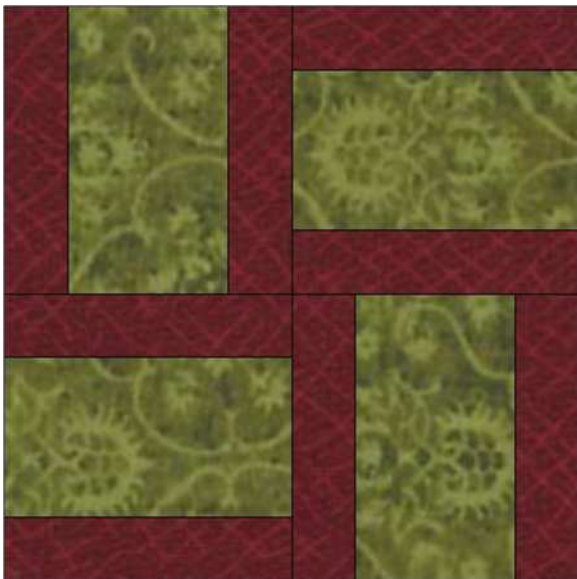
Brown strips are cut 2 inches

I chain pieced my bricks onto a strip of brown fabric cut selvage to selvage and trimmed them with scissors. You may sub-cut your brown strips into sections that are 2 x 6.5 if you prefer.

You will need 130 blocks that are 6.5 x 6.5 inches with seam allowances.



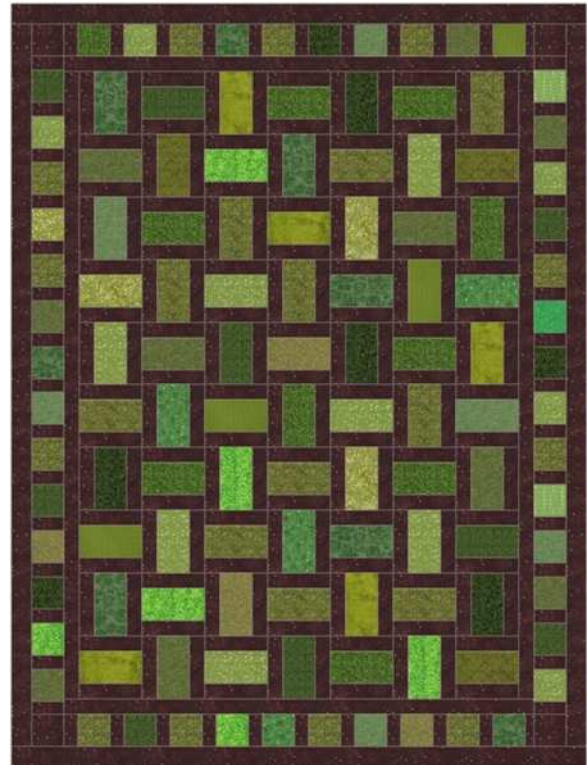
To make the quilt easier to assemble, I sew 4 blocks together as shown below.



These blocks will then be set 5 x 6 with one additional row of single blocks at the bottom of the quilt. Refer to drawing on page one of these instructions.

FOREST BRICKS VARIATION

If you'd like to make my original quilt follow these instructions.



Quilt size is 55 x 73

Bricks are set 7 x 10

Inner brown border is cut 2 inches.

Pieced border is from 3.5 inch squares alternating with 2 inch strips. I used brown cornerstones and you will need to fudge a little (making it a little larger or smaller than 2 inches) on the last strips on each side to make the border fit depending on how accurate your piecing is. If your piecing is exact (mine isn't!) you'd need to use a 2.5 inch strip on all your ends both vertically and horizontally. Your cornerstones will be cut 3.5 inches. It sounds complicated but it's not really, you're just going compensate a little right next to the cornerstones to get a good fit.

Outer brown border is cut 2.5 inches.