

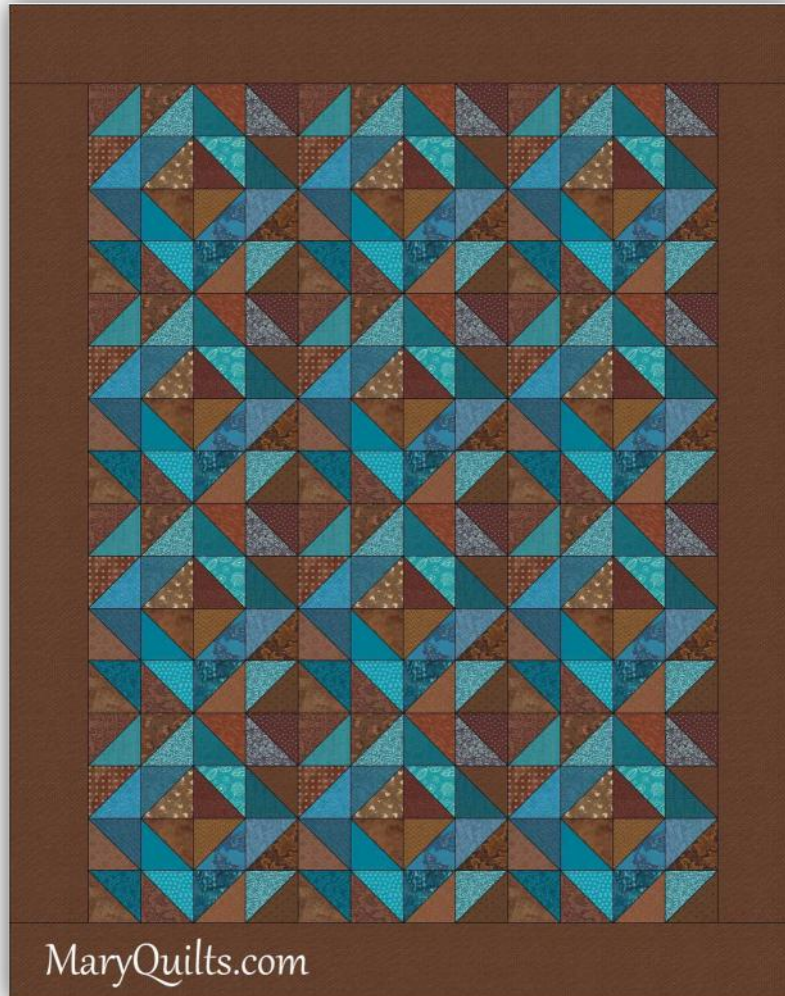
HSTeria Quilt

Half Square Triangle = 4.5 inches with seam allowances

Block size = 16 inches (16.5 inches with seam allowances)

Block set = 3 x 4

Quilt size = 60 x 76



Notes

- I drafted this quilt to make during Vicki Welsh's HSTeria Quilt Along.
- I used a variety of blue and brown fabrics and cut them with my Accuquilt GO 4 inch half square triangle die. You can use any method of creating HST that you choose
- My brown border is cut 6 inches.
- If you prefer smaller blocks you can use 3 inch finished half square triangles but you'll have to figure out how many blocks you'll need to make the quilt the size you want.

Piecing

Make 192 Blue and Brown HST that finish at 4 inches (4.5 including seam allowances)

There are different ways to assemble this block. You can layout all the half square triangles for one block.



And sew them into rows which gives you more control about where each fabric is placed in the block.



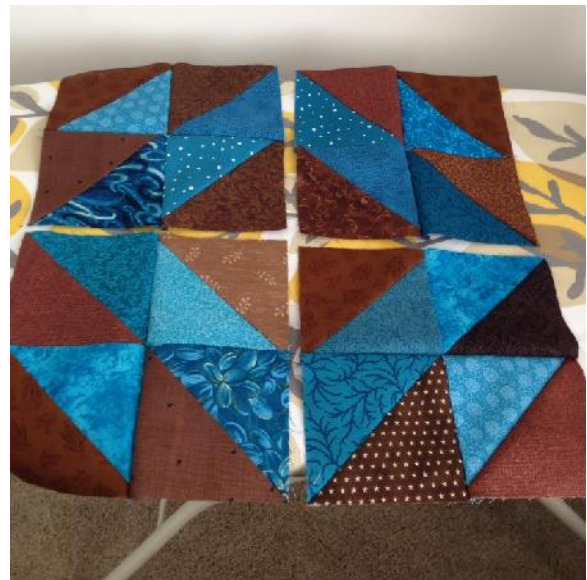
Or you can sew the blocks by fourths, which is a little more random but quicker and my preferred method.

I choose 16 half square triangles and lay out 4 at a time as shown in the photo at the top of the page. The only things I'm really paying attention to here is that the fabrics in the half square triangles are different and that the bottom right

half square triangle is different in each of my 4 sections that will make up my block.



Once each section is sewn together, before I press that last seam, I lay out the block. Rotating each segment into place and pressing the seam so it will nestle with the one beside it.



Assembly

Once all 12 blocks are completed, sew them together 3 blocks across and 4 rows down and add a 6 inch border.